

Wireless Networking Setup Instructions for E-Series Embroidery Machines

Note to Operator: When using the networking function on your Highland Embroidery Machine, you are still responsible for positioning your fabric and performing a trace of your design. Not positioning and tracing your design properly may result in damage to your machine.

What you will need:

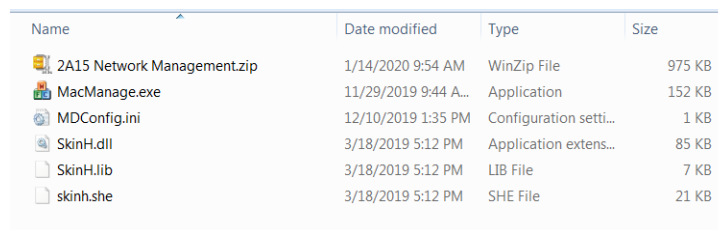
1. USB that came with your machine
2. PC with Windows 10

Step by Step Instructions:

On Your Computer:

1. Insert your USB drive into your computer
2. Click “Open Folder to View Files”
3. Click and open the “A15 Control Panel” folder
4. Click and open the “A15 Network Management” folder
5. Make sure you have all of the following files visible in that folder. If you do not, please proceed through steps 6-10

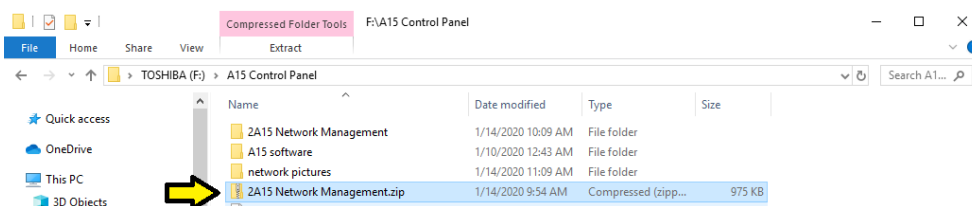
Note to Operator: MESA recommends that you save the contents of the “A15 Network Management” folder to your desktop as well as keep it saved on your USB. At times, firewall protection on your computer may disable MacManage from being used properly if you only have it saved there. If this happens, simply repeat these steps on your USB to save it to your desktop again.



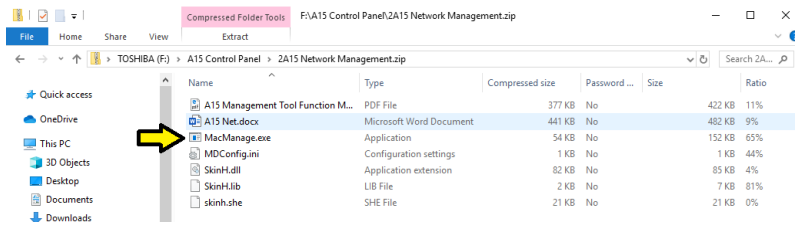
| Name | Date modified | Type | Size |
|-----------------------------|----------------------|------------------------|--------|
| 2A15 Network Management.zip | 1/14/2020 9:54 AM | WinZip File | 975 KB |
| MacManage.exe | 11/29/2019 9:44 A... | Application | 152 KB |
| MDConfig.ini | 12/10/2019 1:35 PM | Configuration setti... | 1 KB |
| SkinH.dll | 3/18/2019 5:12 PM | Application extens... | 85 KB |
| SkinH.lib | 3/18/2019 5:12 PM | LIB File | 7 KB |
| skin.she | 3/18/2019 5:12 PM | SHE File | 21 KB |

a.

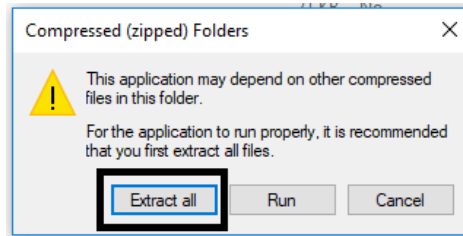
6. Click “2A15 Network Management.zip”



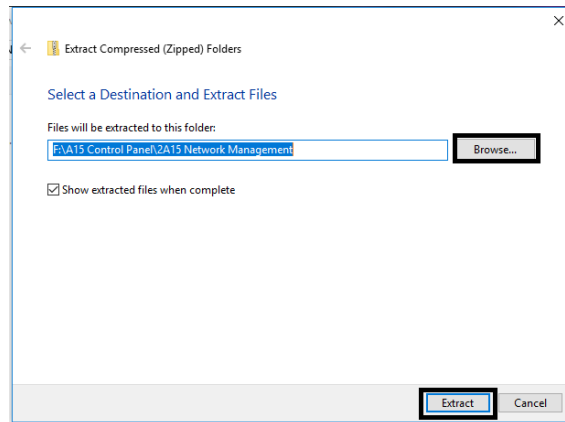
7. Click “MacManage.exe”



8. Click “Extract All”



9. Select which folder you would like to place the extracted files into



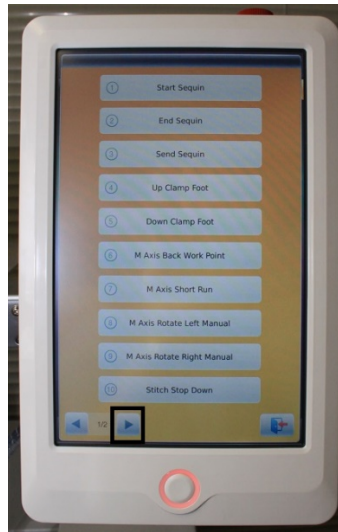
10. Open the folder you extracted the files to

On the Control Panel:

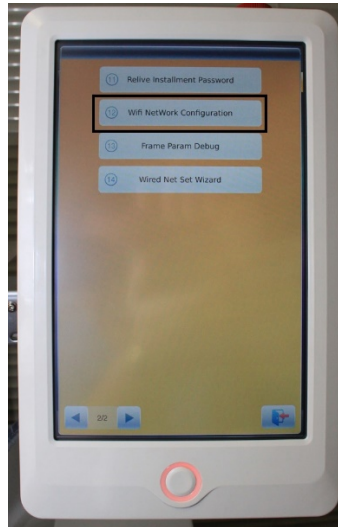
1. On the control panel, tap the “Alternate Functions” icon on the bottom row of your home screen



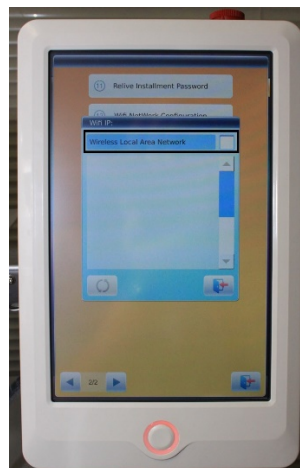
2. Go to the second page



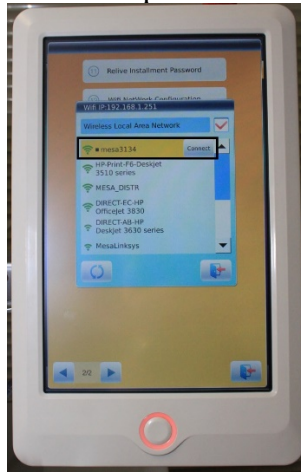
3. Tap Wi-Fi Network Configuration



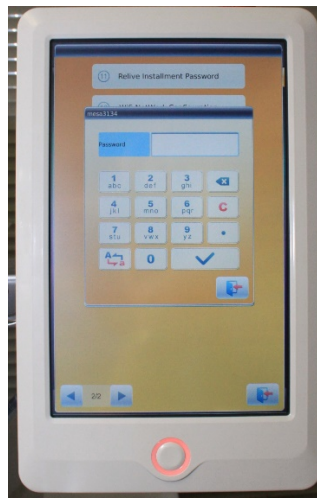
4. Tap the “Wireless Local Area Network” box on the upper right corner to ensure it is checked



5. Once the available Wi-Fi networks appear on the screen, find the Wi-Fi network you are wanting to connect to in the list below and press “Connect”



6. Enter the password for the Wi-Fi Network, then press the check mark.
 - a. Note that in order to type letters in your password, tap the numbers multiple times to have letters appear.

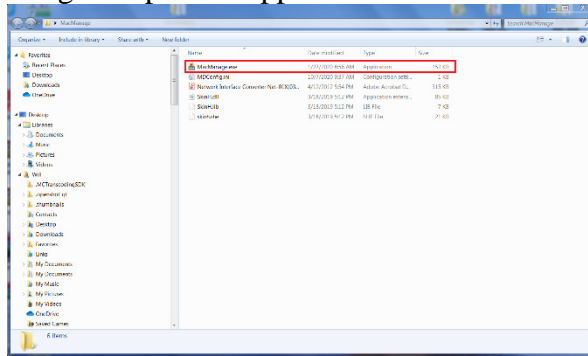


Note to Operator: If you are far away from your wireless router, your machine may connect but have a poor connection. This can cause your machine to disconnect from Wi-Fi in the middle of a design and ruin the fabric and design you are working on. Please make sure you are within a short range of your wireless router for full wireless capability.

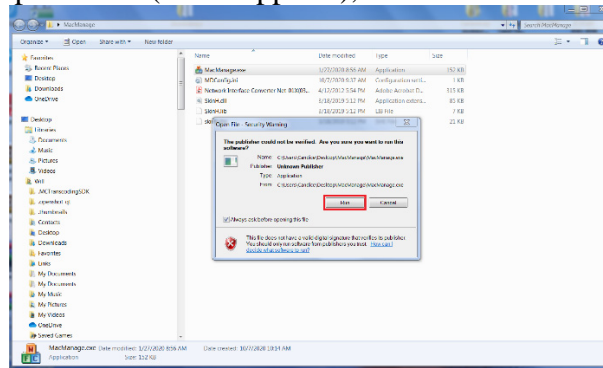
On Your Computer:

7. On your computer, open the MacManage Application and click “Run” in the pop-up window

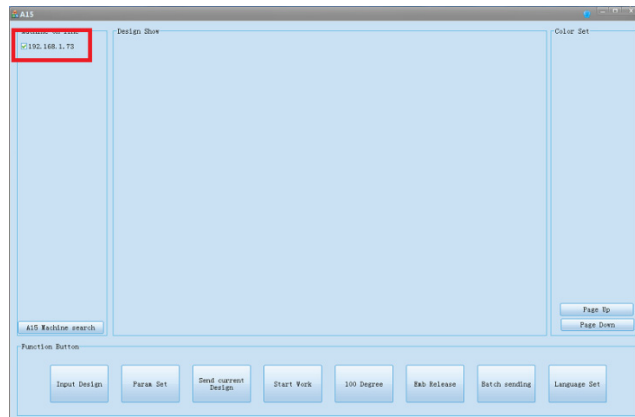
a. Click MacManage to open the application



b. In the pop up window (if one appears), click “Run”



8. You will then see the machine IP. Address in the upper left corner of the MacManage window.

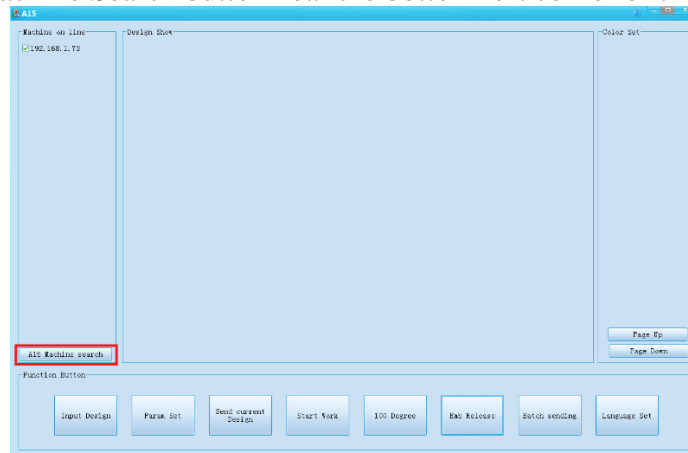


- a. You will also see the Wi-Fi symbol on the top of the control panel now has a check mark next to it showing you are connected.

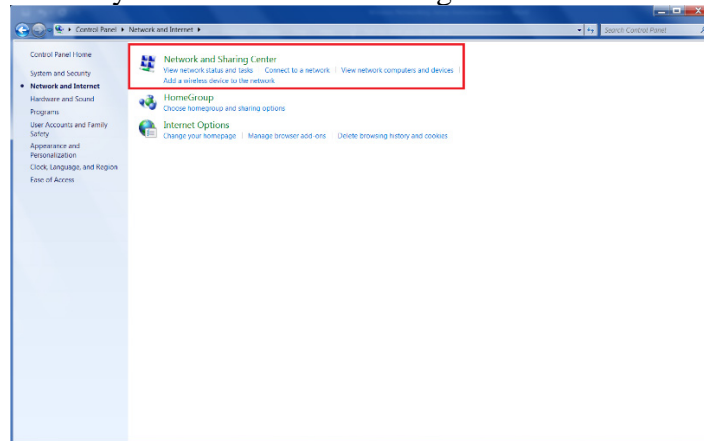


TROUBLESHOOTING

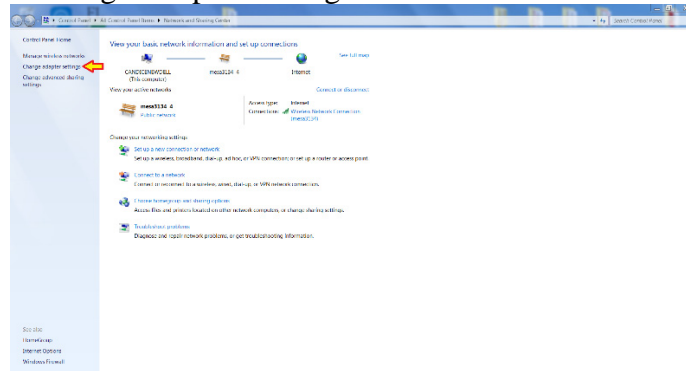
1. If you do not see your machine connected in the Mac Manage Application right away, click the A15 Machine Search button near the bottom left corner of the screen



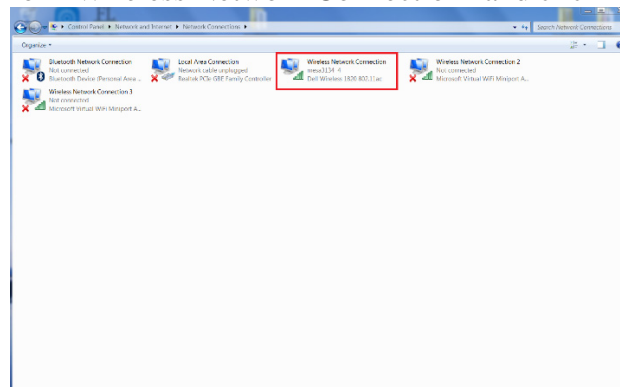
2. If you still do not see your machine connected in the Mac Manage Application, your computer may be reading a different IP Address than the machine. To resolve this:
 - a. Make sure your computer is connected to the same wireless network as your embroidery machine
 - b. IF IT IS: Go to your Network and Sharing Center



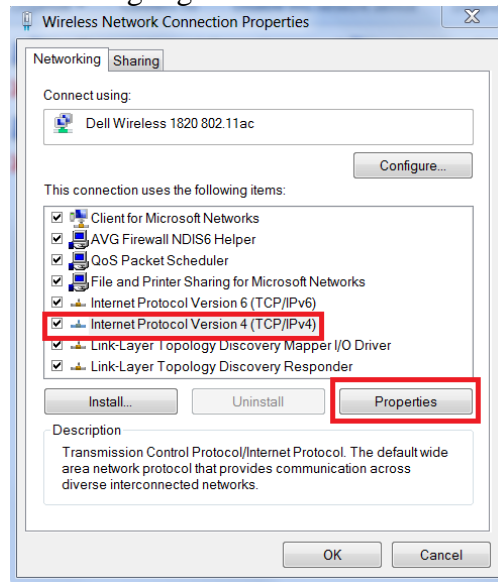
- c. Click on "Change Adapter Settings"



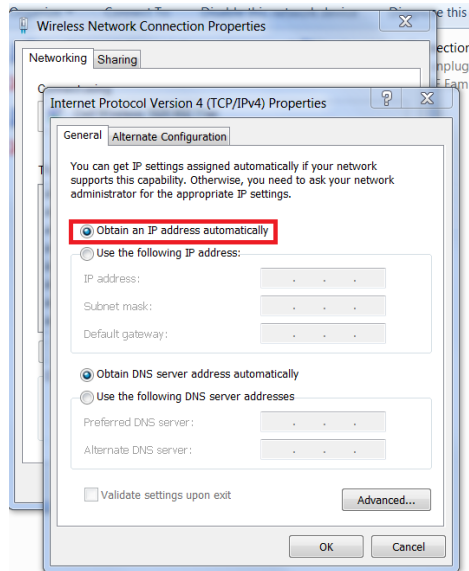
- d. Right click on "Wireless Network Connection" and click "Properties"



e. Click on IPV4 once to highlight it and then click “Properties” below.



f. Be sure that it is set to “Obtain an IP address automatically”



Once you have it set to obtain an IP address automatically you should be good to go and not have any more problems connecting

If you are having trouble loading designs and receive an error on your computer screen that says “Network Anomaly!” please take the following steps to save the MacManage files to your computer from your USB:

On Your Computer:

1. Insert your USB drive into your computer
2. Click “Open Folder to View Files”
3. Click and open the “A15 Control Panel” folder
4. Click and open the “A15 Network Management” folder
5. Make sure you have all of the following files visible in that folder. If you do not, please proceed through steps 6-10

Note to Operator: MESA recommends that you save the contents of the “A15 Network Management” folder to your desktop as well as keep it saved on your USB. At times, firewall protection on your computer may disable MacManage from being used properly if you only have it saved there. If this happens, simply repeat these steps on your USB to save it to your desktop again.